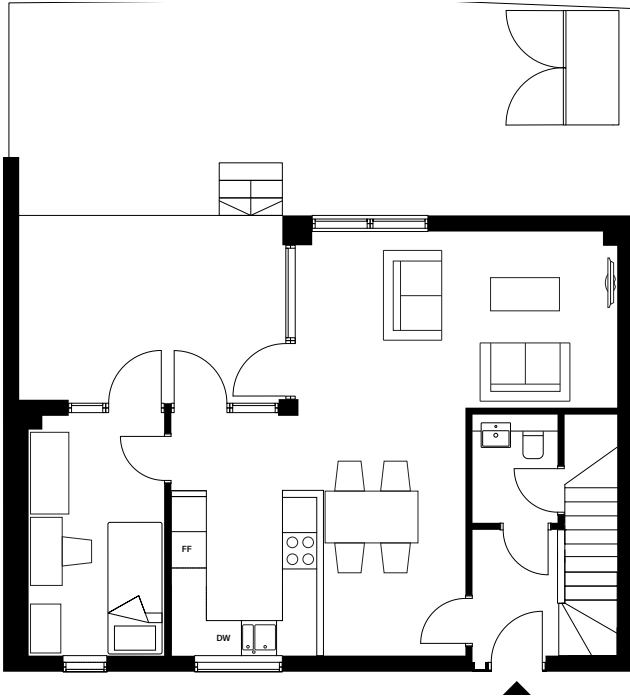
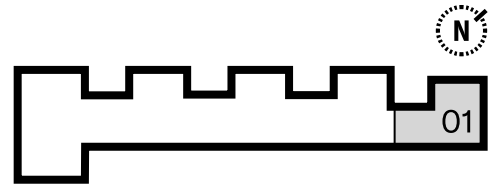
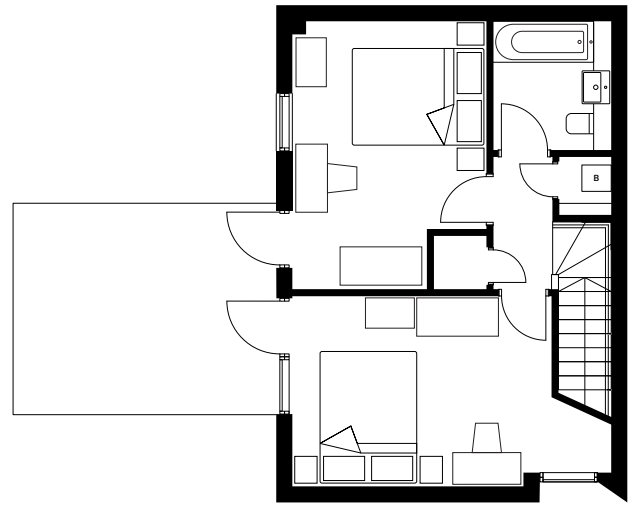


Oxford Road

Plot 01



Ground floor



First floor

Specifications

Kitchen

2.7 × 2.5m (8'10" × 8'2")

Living / dining area

5.45 × 7.25m (17'11" × 23'9")

Master bedroom

5.45 × 3.3m (17'11" × 10'8")

Bedroom

3.3 × 4.6m (10'11" × 15")

Bedroom

2.3 × 4.1m (7'5" × 13'45")

Toilet

1.45 × 1.85m (4'9" × 6'1")

Toilet

1.45 × 1.85m (4'9" × 6'1")

Bathroom

2 × 2.15m (6'6" × 7'05")

Garden

37.8 sqm (407 sqft)

Terrace

14.2 sqm (153 sqft)

Balcony

16.2 sqm (174 sqft)

Total area

101.3 sqm (1090 sqft)